



.....crest of excellence

KB CREST SERVICES LIMITED

(RC 805231)

CORPORATE OVERVIEW & CORE SERVICES

Contact

KB CREST YARD,

Greater Port Harcourt Stadium Road, Int'l Airport Road, P.O Box, 6278 Trans-Amadi Ind. Layout, PHC.

7 Aje Street, Commercial Avenue, Yaba - Lagos.

Tel: +234 9036044421

Email: info@kbcrest.com

www.kbcrest.com

© 2014



About KB Crest Services Limited

We are a leading Project Management, Civil infrastructure and Mechanical Construction Services Contractor. We undertake large industrial, commercial and infrastructure projects for public and private customers and in the oil and gas industry.

Our history dates back to year 1999 when ‘CKJ International’ now KB Crest Services Limited is established to provide Engineering, Construction and Maintenance, industrial support and Logistics services mainly to IOC’s and their service companies. We have since grown to be a reputable indigenous business of choice and pride ourselves with providing world-class expertise and best practices in all operations.

Our pledge to deliver satisfaction to our clients informs our cautious choice of business units to ensure peerless synergy in all our projects and operations.

KBC Services in alliance with strategic partners have a combined over 45 years’ experience in EPC for hydrocarbon facilities, Integrated Logistics, Oilfield and Marine Supplies/Support Services.



Our Vision, Mission and Values

KB Crest Services Limited [KBC] will be the best Management Consultancy, Construction, and Energy Services provider.

Towards our stance, *KBC* creates collaborative and mutually rewarding relationship with all stakeholders; Work safety and environmental sustenance will be the first consideration in all our operations and corporate activities will be conducted to the highest ethical and professional standards.

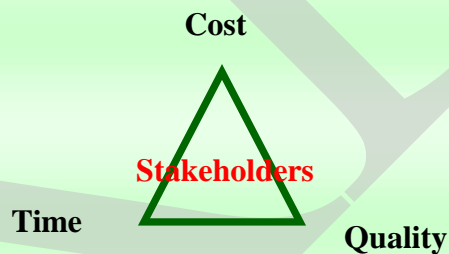
“Our Environment is our Livelihood...Protect it”

KBC Core Competences and area of Services

- **Organizational, Program and Project Management Consultancy Services**



KBC in-house expertise and seasoned management professionals coupled with our structured management systems formulated in-line with ISO and industry best standards ensures our superior management consulting services.



Our goal is to achieve all stakeholder satisfaction, fulfil budget plans, and ensure quality and timely delivery of our projects.

□ ***Heavy Hydrocarbon Production Facilities and Civil Infrastructure Construction and Maintenance Services***

KBC's planning, engineering and construction experience encompass the full spectrum from strategy formulation, project specific conceptual planning - through to - project execution, operations and maintenance to end of the venture's life cycle - decommissioning.

KBC is equipped with very dynamic and experienced Engineering Design Teams with specialty for Civil, Mechanical, Electrical Engineering and hydrocarbon facilities design Services. Our engineering design unit service include conceptual, FEED to main design deliverables and quality and constructability is emphasized in our engineering projects. We employ contemporary and best engineering design software to ensure our customers get their deserved best.

Our Specialist services are

Mechanical fabrication/installation and upgrade works for hydrocarbon production, transportation and storage including Oil and Gas Pipe & flow lines Construction, Pipeline integrity management, Refining/Production facilities and Products storage systems; Civil infrastructure Construction including Location preparation, Buildings, Roads and bridges, marine structures such as construction and installation of Quay wall and Load out jetty.

The vast industry knowledge and experience of our top management and project teams and the in-house program and project management expertise is core in delivery of our promises.

KBC's owned fabrication and construction facilities/equipment and our alliance with major Onshore/offshore construction equipment, Marine/Sea-going Vessels operators have positioned us strategically to deliver our endeavours promptly.

□ ***Industrial supply and on/offshore operations support***

KBC alliance with major Marine operators, on/offshore original equipment manufacturers and Suppliers enable us provide marine logistics and industrial support services allowing our customers focus on their core business.

Our oilfield supply range includes Carbon & Stainless steel pipes, OCTG's, Butt weld fittings, Flanges, Valves, forged fittings and Hydrocarbon Exploration / Production Equipment and Chemicals.

Brief Description of KBC Organizational Structure



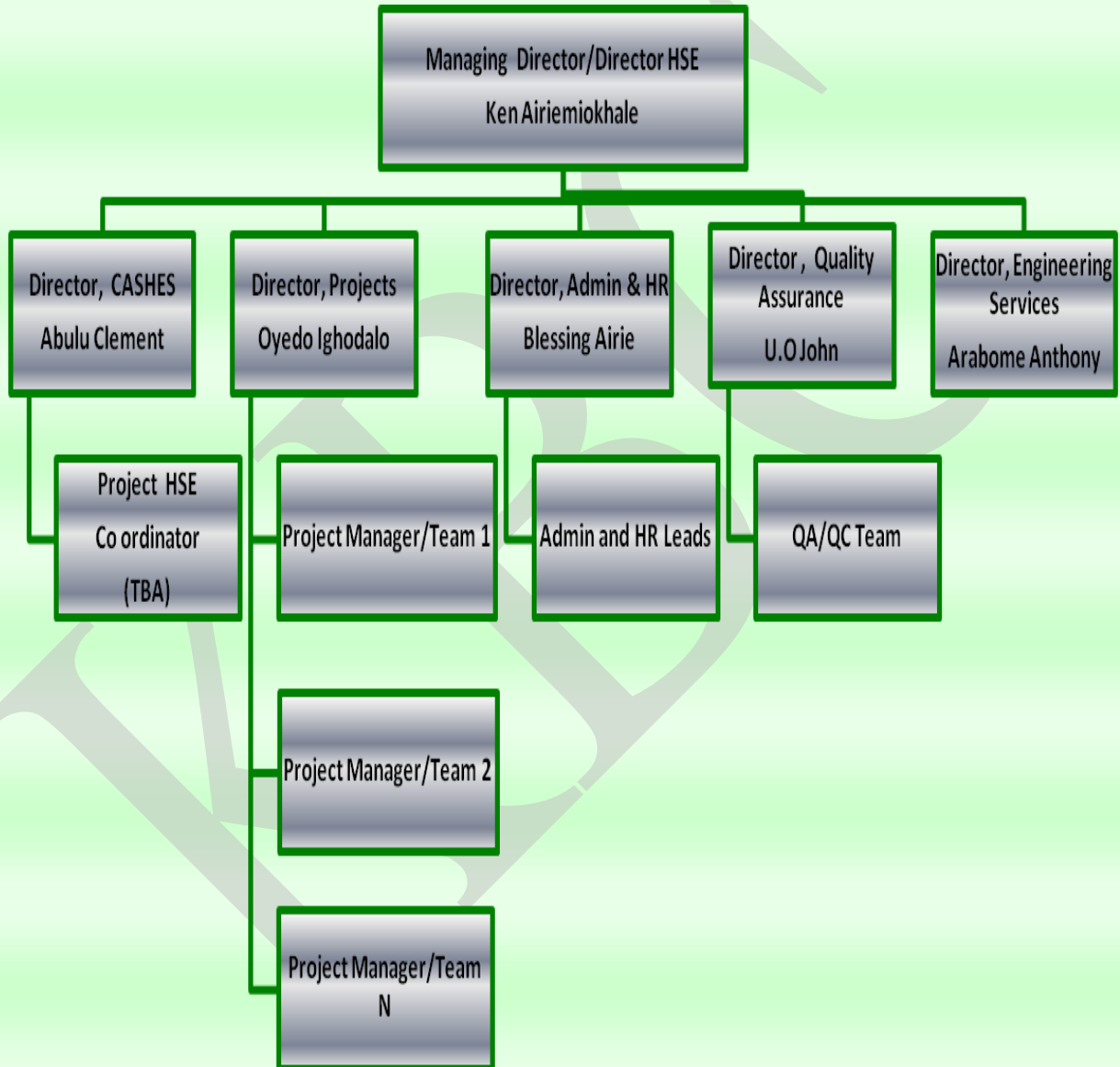
KBC operates a simple semi-decentralized system with a central administrative unit that interfaces and coordinates business units and project teams for effective and specific control of opportunities. However these units are integrated to achieve synergy in all our operations.

The board of Directors and chief executive officer directs the business; A flattered and flexible management structure is practiced which provide an environment for innovation and human development to thrive. These is aimed towards delivering superior and focused customer satisfaction, enhanced local content development and improved competitiveness and profitability.

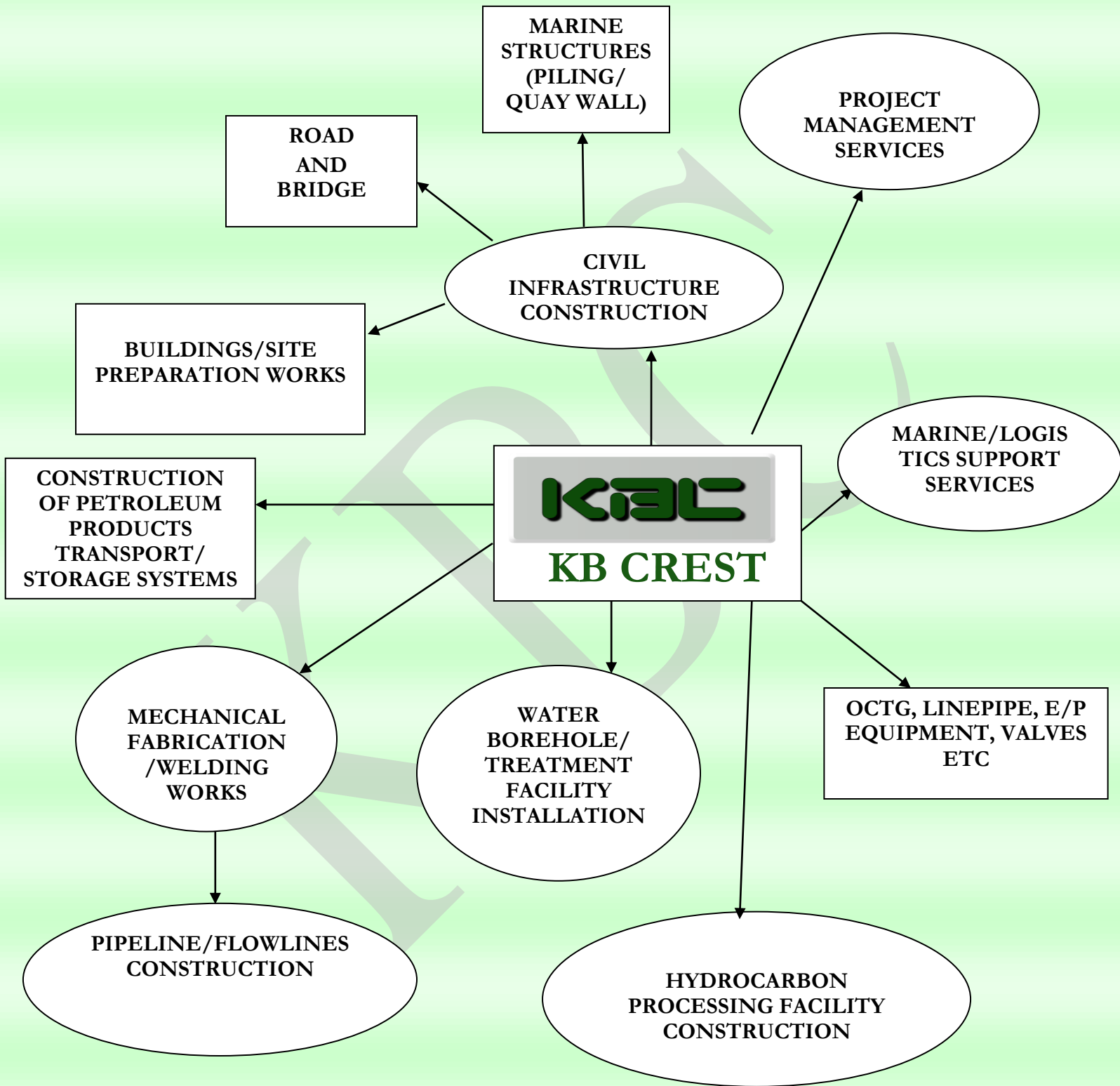
MANAGEMENT PERSONNEL DETAIL

ID No.	NAME	OFFICE	CONTACT
001	Engr. Kenneth Airiemiokhale	Chairman/CEO (B.Eng, MBA, COREN)	a.kenneth@kbcrest.com / kenose2001@yahoo.co.uk
002	Mrs. Blessing A .O	Director, Finance and Administration	ablessyn@yahoo.com / a.blessing@kbcrest.com
003	Engr. Oyedo Ighodalo	Director, Projects and Management Consultancy.	oyedo@hotmail.com , info@kbcrest.com
004	Engr. Arabome Anthony	Engineering Manager, Mechanical	info@kbcrest.com
005	Engr. Kasim Chiedu	Engineering Manager, Civil Infrastructure	info@kbcrest.com
006	Engr. John Uyeh	Quality Assurance Manager	info@kbcrest.com
007	Engr. Joseph Osaigbovo	Project Engineer, Civil	Joseph.osaretin@kbcrest.com
008	Engr. Sylva Uwagboe	Project Engineer, Mechanical	sylva.uwagboe@kbcrest.com
009	Royal Aleru	Base Manager, Health Safety and Environment	info@kbcrest.com
010	Bernard Ekunwe	Coordinator, Public Relations	info@kbcrest.com

KBC MANAGEMENT ORGANOGRAM



REPRESENTATION OF KB CREST SERVICES



OUR PROJECT HISTORY



.....Road Construction

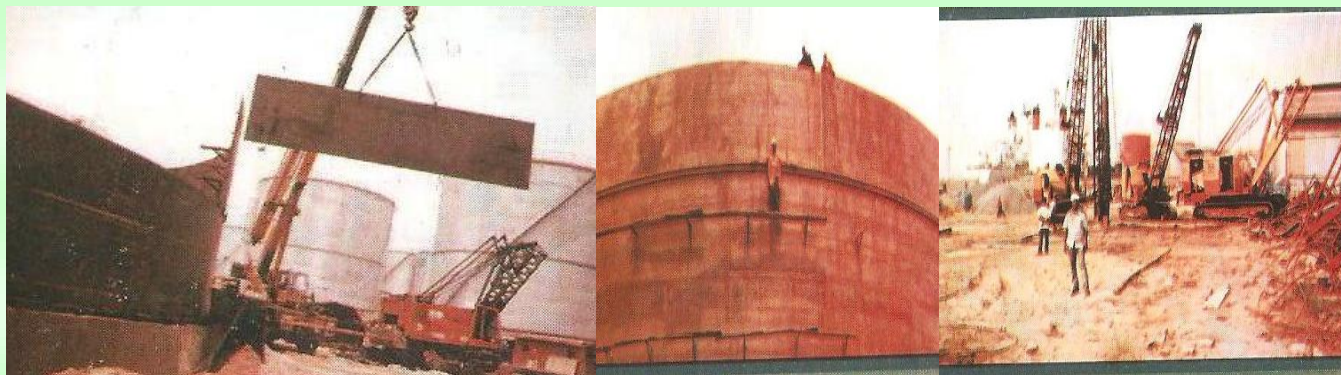


.....Pipelines Construction



..... Piling Construction works

Year	Project Description	Client	Location
On-going	Construction of (3 Nos.) 6 inches X 6km bulklines & (1 No,) 4 inches X 6km and Fabrication and installation of Obi -Anyima satellite Manifold.	Pan Ocean Oil Co-operation Nig. Ltd.	Obi-Anyima Manifold to EPF at Owa-Alidinma, Delta State.
2013	Provision of Piling Services and load out quay construction, blasting and painting	Addax/Kaztec Alliance	Snake Island, Lagos.
2013	Construction of Dual (2 Nos.)10 inches & Single 6 inches X 15km Oil and Gas pipelines.	Pan Ocean Oil Co-operation Nig. Ltd.	Owa-Aladinma to Ovade-Ogharefe Flow Station, Delta State.
On-going	Construction of Common Export Facilities Integrated Project – Civil Scope	Vandrezzer For FUN Group.	Mobil QIT Area, Eket, Akwa Ibom



..... *Construction of Storage tanks*

On-going	Project Management, Procurement Services and Fabrication/Construction for De-sanding Unit For Natural Gas.	DSV Pipetronix For GasLink/Oando Gas and Power.	Lagos State
On-going	EPC of 30,000 metric tons of petroleum product storage deport from foundation to finish including internal piping, Gantry and all other facilities of functional deport.	Integrated oil and Gas Ltd.	NPA-CALABAR
2009	EPC of 500mx2Nosx6”OD petroleum product Receiving lines including all accessories for 30,000 metric Tons petroleum product storage terminal(Completed)	Mettle Energy oil & Gas Deport NPA-CALABAR	NPA-CALABAR
2008	Crude oil storage tank including pipelines. Hydrant lines, foam system and Bundwall, Pump house and instrument termination in the process login control unit.	Ovada flow Station Awarded to Decan Services sub contracted to Vickln	DELTA STATE
2013	Provision of Industrial water Borehole/Treatment (Steel Casing)	Addax/Kaztec Alliance	Snake Island, Lagos.
2011	Drilling of water bore and Installation of 20,000 Liters capacity water tank with Generator shed.	Frontier Oil Limited/Contact	Eket, Akwa Ibom State
2012	Well-5 Drilling Location preparation works. Provision of water inclusive (Pls see supporting Doc. Enclosed)	Frontier Oil Limited/Contact	Eket, Akwa Ibom State
2010	Rehabilitation of Mbede 4 Location for Land Snubbing Unit work over rig activity. Bore hole drilling inclusive (Pls see supporting Doc. Enclosed)	Nigeria Agip oil Company	Mbede, Rivers State

2010	Preparation of Obiafu AN (6) Location. Bore hole drilling inclusive (Pls see supporting Doc. Enclosed)	Nigeria Agip oil Company.	Obiafu, Rivers State
2010	Preparation of Oshie Q & R (1) Location. Bore hole drilling inclusive (Pls see supporting Doc. Enclosed)	Nigeria Agip oil Company.	Oshie, , Rivers State
2001-2003	Design and construction of residential buildings, workshop, Reinforced concrete rigid pavement/roads, load-out quay maintenance, Provision of water supply - Borehole drilling complete with 10 liters overhead storage tower and treatment plant)	Daewoo (Engineering & Construction)	Main and Swamp sub base – Port Harcourt.
(1999 till date)	List of Residential and Commercial developments Across the Country. All Projects include provision of water (Bore hole) and overhead storage Tower, Optional treatment facility.	Private Developments	Lagos, PHC, Abuja Etc
On-going	Industrial Supplies/support and Facilities maintenance services	West Africa Catering limited.	Port Harcourt.
2001	Well Location upgrade and 22km ROW Clearing, Grading and Road Stabilization.	Pan Ocean Oil Co-operation Nig. Ltd.	Ovade-Ogharefe, Delta State



..... *Marine Logistics*

STATUS/ YEAR	PROJECT DESCRIPTION	CLIENT	LOCATION
2013	Provision and logistics crew Boats, Tug-boat & Barges for Belema Associated Gas Gathering projects	Daewoo (Engineering & Construction)	Bayelsa State
2007	Provision and Operation of Security Gun Boats	Gladtrico Int'l Ltd. for Chevron	Delta State
2006	Supply & Lease of offshore supply vessels	Ranz Limited	Lagos State
2004/2005	Provision and logistics crew Boats, Tug-boat & Barges. Flow station upgrade	Daewoo (Engineering & Construction)	Warri, Delta State



..... *Civil Eng. Infrastructure Dev. & Site Location Preparation*

2015	Equipment Support and Construction Services	Deux/Rivers State Government – Greater Port Harcourt and International Stadium Area Upgrade	Port Harcourt, Rivers State
2015	Equipment Support Services and Construction support	Estrada Const. Ltd. for SHELL Petroleum development Coy. – Location Access Road and Bridge Construction.	Anambra State
2014	Equipment Support and Construction Services	DSC Africa/Rivers State Government – Greater Port Harcourt and International Stadium Area Upgrade	Port Harcourt, Rivers State
2013	Greater Port Harcourt Area Road network Construction	CCECC/ Rivers State Government	Port Harcourt, Rivers State
2012	Construction of 2km Obubra Internal Roads Phase II, Obubra L.G.A, Cross -Rivers state.	The Presidency/NDDC	Obubra, Cross Rivers State

2001-2003	Design and construction of residential buildings, workshop, Reinforced concrete rigid pavement/roads, load-out quay maintenance, Provision of water supply - Borehole drilling complete with 10 liters overhead storage tower and treatment plant)	Daewoo (Engineering & Construction)	Main and Swamp sub base – Port Harcourt.
(1999 Till date)	List of Residential and Commercial developments across the Country. All projects include provision of water (Bore hole) and overhead storage Tower, optional treatment facility.	Private Developments	Lagos, PHC, Abuja Etc

PARTNERSHIPS AND STRATEGIC ALLIANCE

KB Crest Services Limited is also in Partnership with **CPTDC**, **US marketing Corps** and together provides Procurement and Supplies of Drilling Equipment, Chemicals and Refining Equipment, Production Equipment, Offshore Equipment, Power Generation Equipment & Power Units, Exploration & Logging Equipment, Line Pipe & OCTG's, Oilfield Facilities.



.....crest of excellence



Introducing ...

▶ **KB CREST & CPTDC** **PARTNERSHIP** and **SERVICES**

In line with Local Content Policy for building local capacity in the Oil and Gas industry



.....crest of excellence



CPTDC Worldwide – sales arm of CNPC equipment



2012/11/16

22



.....crest of excellence



CPTDC History & Sales Records

Established 53 overseas offices in 40 countries
Products and service provided to 70 countries.

Marketing network covered 46 countries and areas
Market share increased rapidly

Established in 1987 and started export business in 1992



.....crest of excellence



Main International Clients

- > Supplier of **21 National Oil Companies (NOC)** and **39 International Oil Companies (IOC)** such as PDVSA Venezuela, SNOATRACH Algeria and NIOC Iran.
- > Keep long-term cooperation relationships with **36 large service companies**:
 - Provided 8 sets of drilling rigs to NABORS USA
 - Have provided mud pumps to PRECISION Canada for the recent 16 years.





.....*crest of excellence*



CPTDC

Main Products



Drilling Equipment



Chemicals and Refining Equipment



Production Equipment



Offshore Equipment



Power Generation Equipment
& Power Units



Exploration & Logging Equipment



Line Pipe & OCTG



Oilfield Facilities



.....crest of excellence

KB CREST

SERVICES LIMITED

HSE MS Overview

Email: hse@kbcrest.com

www.kbcrest.com

KB CREST SERVICES LIMITED [KBC] HSE OVERVIEW

The **KBC** Health, Safety and Environment Management System (HSE MS) manual is developed to standardise and operationalize work safety practices and environmental sustenance in all our endeavour(s). The manual directs activities of KBC to ensure work safety, environmental sustenance and host community partnership goals and objectives are achieved.

This document adopts global and local Nigerian work safety laws and statutory regulations for total compliance to HSE MS concerns in our regular working environment and during project execution.

In KBC, safety at work is top management priority thus we have developed and institutionalize our safety policy statements which are well circulated and understood by our work teams.

Regular audits and reviews of the HSE MS document is planned to ensure compliance with legislation, update in HSE practices globally as well as taking forward and incorporating leanings from past for a continually robust HSE MS standards.

This KBC manual or sections there-off of work safety assurance and environmental sustenance is the cardinal and foremost paper for presentation in organizational activities and inductions of new employees and visitors in our facilities.

KBC in work(s) awarded to a contractor whether an in-house project or sub-contract of a major project awarded to KBC shall be executed following the same HSE MS guidelines and procedure. Contractors must demonstrate their willing and top management commitment to HSE issues and shall constitute the major factor for award of contract.

LEADERSHIP AND COMMITMENT

KBC Senior Management is committed to continual improvement in the management of the Health, Safety and Environmental of the company and in specialized services to our clients.

Successfully implementing the KBC HSE MS manual will result to safe work conditions in our offices and project sites, required efforts will therefore be focused on the full and personal participation of senior management in HSE MS standardization, meetings, audits and inspections and management review essential to crafting a robust and holistic system.

This will be achieved by the following clear steps:

Step 1: Institutionalize KBC HSES policy

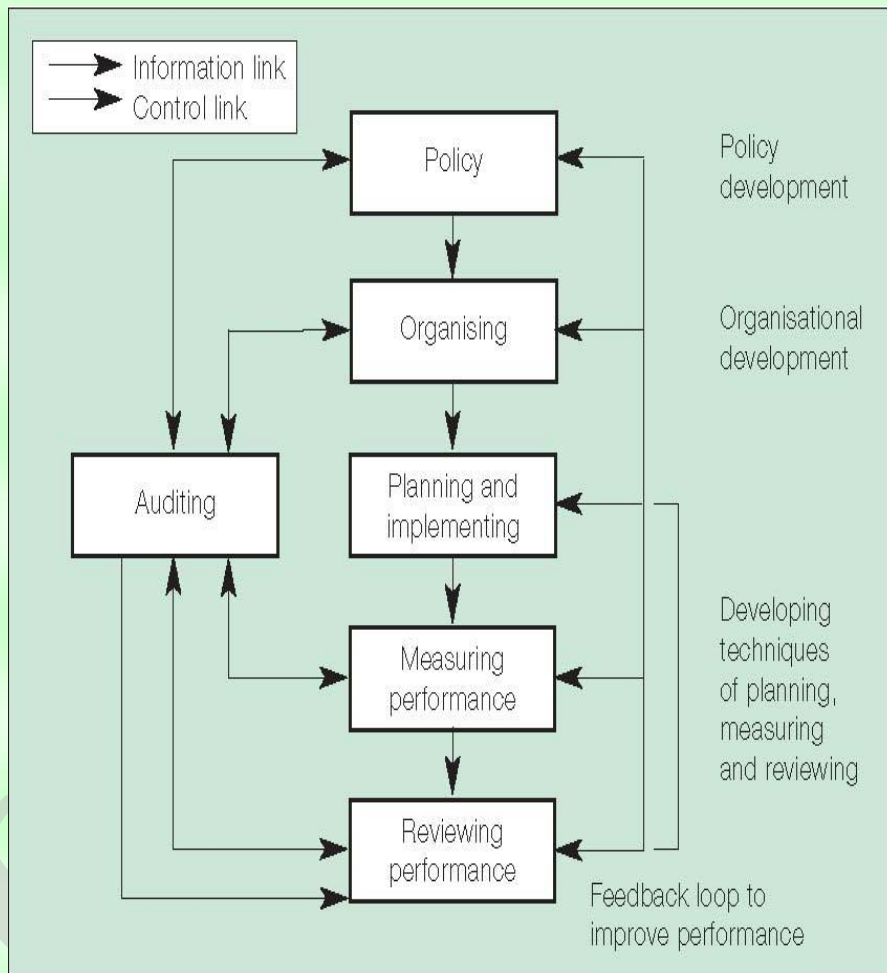
Step 2: Organize KBC staff with senior management at the helm of HSE affairs.

Step 3: Plan and set KBC HSE MS standards aligned globally/local.

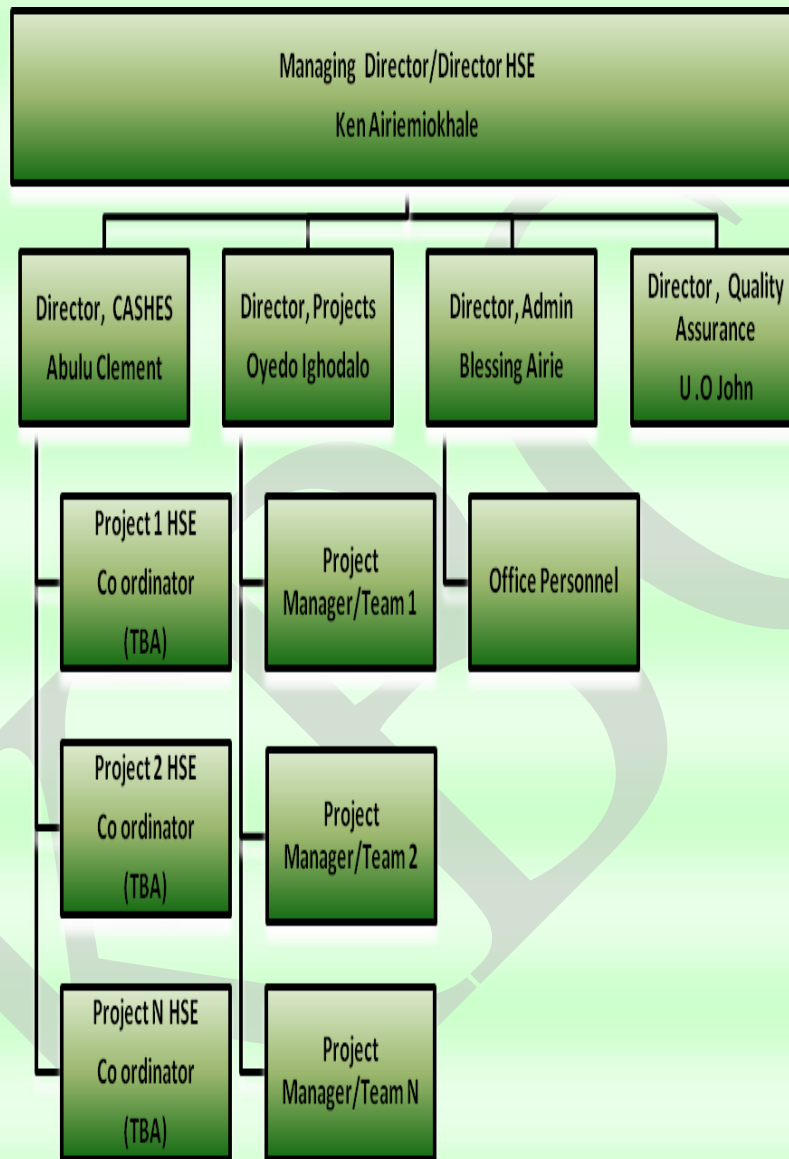
Step 4: Measure our performance

Step 5: Learn from our/others experience, carry out regular audit and review.

Figure illustrates KBC HSE management assurance system.



KBC HSE MS Organizational chart



1.2 KBC HSE MS POLICY STATEMENTS

HEALTH, SAFETY, ENVIRONMENT AND SECURITY POLICY

KBC is fully committed to ensuring the health, safety and welfare of its employees at work and to protect other persons, including the general public, against risks to Health, Safety, Environment and Security arising in connection with the activities of the Company and its employees at work.

KBC will constantly maintain the highest standards of Health, Safety, Environment and Security in all its operations / activities, by promoting and ensuring safe work practices.

KBC believes in the importance of healthy and safe working conditions / environments and shall always ensure compliance by its sub-contractors.

The KBC safety motto reads:

“Dedicated to the highest standards of Health, Safety, Environment and Security in all our Endeavours”.



Engr. Kenneth Airiemiokhale, *MBA*
(Managing Director)



.....crest of excellence

**KB CREST
SERVICES LIMITED**

LOCAL CONTENT POLICY

Policy Statement

KBC will strive continually to employ Nigeria human resources, materials, equipment and services in all our endeavours. Work safety and environmental sustenance will be the first consideration in all engagements and mutual corporate activities will be conducted to the highest ethical and professional standards.

Objective

To promote economic growth and sustainability in Nigeria via development and engagement of local resources in all aspects of our business. Our aim remains to achieve 100% Nigerian participation including in technology acquisition.

KB CREST SERVICES LTD.
Sign:
Date: 03/03/2009.....

Sign
Engr. Kenneth Airiemiokhale
(Managing Director)

KBC Quality Systems Overview



KB Crest Services Limited

Quality Manual

KBC/QM/001J

© 2011

KB



KBC QUALITY POLICY

It is the policy of KB Crest services Limited [KBC] to provide services and Product that satisfy the Client's needs, meets specified quality requirements and is in accordance with contractual, code and regulatory requirements.

To ensure that this is accomplished, the Quality Manual has been developed to comply with the requirements of the ISO9001/2000 International Organisation for Standardisation.

The quality assurance personnel performing activities affecting quality shall have sufficient authority access to work areas, and organisational freedom to prevent and identify quality problems. They shall also initiate, recommend and provide solutions to quality problems through designated channel, and verify implementation of solutions.

The authority to verify the implementation of the Quality Manual related to fieldwork is delegated to the QA/QC Manager. The QA/QC Manager is responsible for assuring that the requirements established in this Plan are completely adhered to. He is also responsible for reporting the implementation status directly to the Project Manager.

The Project Manager shall resolve any conflict, which cannot be resolved between the Quality Assurance/ Quality Control Team and other organisations. All resolutions shall be within contractual documents, applicable codes and standards and this Quality Manual.

Signed by: _____

Managing Director



Decide with Confidence

D&B NUMBER CERTIFICATE

This is to certify that

KB CREST SERVICES LIMITED

8 Adaozu Unity Street,
East West Road,
Port Harcourt,
Rivers State,
Nigeria

is now part of the

Dun & Bradstreet Global Database

and as on 4th July 2011 has been assigned the

D&B D-U-N-S Number

85-050-0343

This certificate is valid till 3rd July 2012.

Authorized Signatory
Dexter Pereira
(Regional Manager - Risk Management Solutions)





..... *crest of excellence*